



# Welcome to Year 1

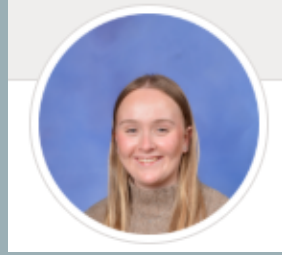


Halifax Primary School  
Meet the Teachers

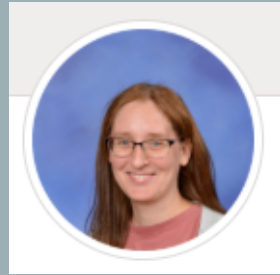
# Staff:

## ❖ Teachers

- Miss Davis (IAD)



- Mrs Stankiewicz (ISS)  
(Monday – Wednesday)

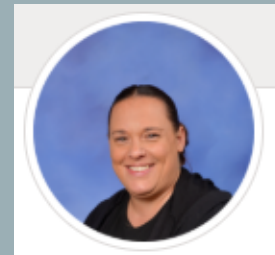


- Mrs Seaman (ISS)  
(Wednesday – Friday)



## ❖ Support staff

- Miss Marsh (class support am/pm)
- Miss Kuszewski (class support am)



## How to contact us:

Please use messenger on Class Dojo in the first instance. A member of staff will also be on the gate in the morning to take any messages to pass them on to the class teacher. For absences, please contact the school office. If you need to speak to us at home time, please wait until we have safely released all children.



# The school day:



- The gate is open from 8.35am. The gate closes at 8.45am.
- Break time will be at 10.30am and lunchtime will be from 12.15-1.10pm.
- SNACK – no rolling snack, just fruit at break time
- The school day will finish at 3.15pm.
- Children will come into school through the KSI gates.
- At home time the children will be collected from the Year One outside area. We will release from the classroom so please wait by your child's classroom door.

# Continuous Provision:

- We will replicate Summer term of Reception in the Autumn term of Yr1 to help the children transition.
- **What does that mean?**
- The doors will be partly open so children can free-flow between the classes.
- Children will work in large groups which will be done in ISS classroom with quieter activities.
- Children can complete challenges in IAD and in the outdoor area throughout the day.
- During the Spring and Summer we will become more formal to prepare the children for Yr2.

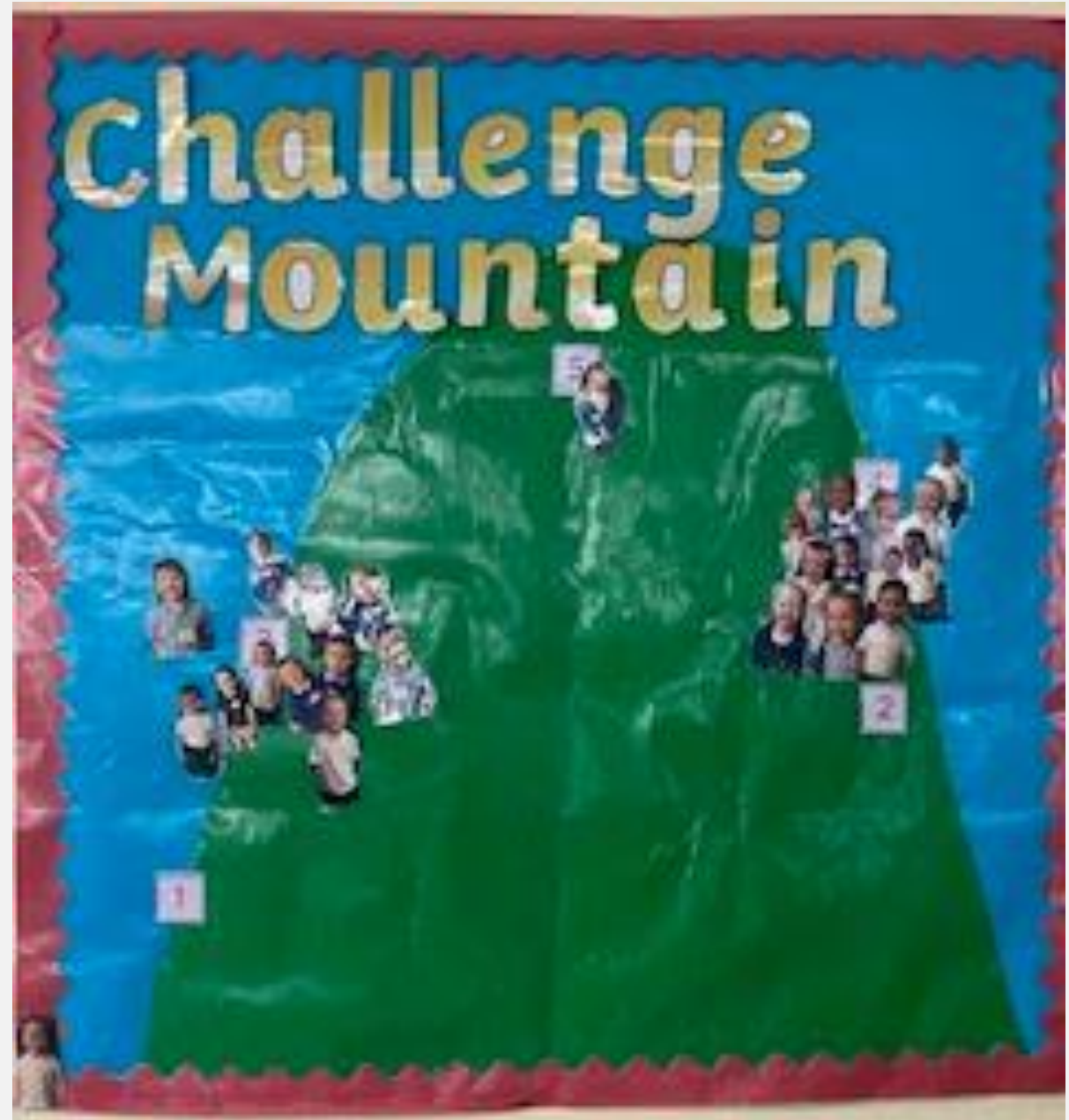


## CHALLENGE MOUNTAIN

Just like in Reception children will be completing 5 challenges per week. We encourage the children to do one per day.

As the term progresses, we will increase the challenges to 6 or 7 per week. Meaning more than 1 per day.

Challenges will be tracked using Tapestry like they are now.



# Attendance and Punctuality:

Good attendance and punctuality is a skill for life and the best way to embed this skill in our children is to promote high expectations as soon as they start school.

When we are thinking about attendance '*Helping Each Other to Aim High*' means that we all aspire for our children to be in school, on time, ready to learn each day. We encourage our pupils and their families to aspire for 100% punctuality and attendance. We will update you each week on how we're doing.

*Did you know that children are only in school for 190 days a year?* This means there is a lot of learning that we need to fit in, so every minute counts.

ATTENDANCE	LOST LEARNING
100%	Nothing missed Everything gained
99.5%	1 DAY 5 LESSONS WITHIN EXPECTATION
99%	2 DAYS 10 LESSONS WITHIN EXPECTATION
98%	4 DAYS 20 LESSONS WITHIN EXPECTATION
97.99%	Over 4 DAYS Over 20 LESSONS BELOW EXPECTATION CATCH UP REQUIRED
95%	9.5 DAYS 45 LESSONS WORRYING, CHANCES OF FALLING BEHIND IMPACTING ON SUCCESS
92%	15 DAYS 70 LESSONS LESS LIKELY TO SUCCEED & HARDER TO MAKE PROGRESS
90%	19 DAYS 95 LESSONS LIKELY TO HAVE A DETRIMENTAL EFFECT ON ACHIEVEMENT & LIFE CHANCES

# Approach to Behaviour at Halifax:

At Halifax, we understand behaviour as a learning process. Children will push limits, boundaries, and societal norms as part of their development.

Children may also react in different ways to stress, lack of understanding, over-excitement, and disappointment. Our staff view behaviour mistakes as inevitable. This means that we offer support, help and guidance to our pupils so they can learn from these mistakes and improve for next time.

As part of our wider curriculum, we teach our pupils what it means to be respectful, responsible, safe and caring. We use these terms to challenge unwanted behaviour using restorative conversations.

# Working together to support children's behaviour in school:

At school we will:

- Create a calm and safe environment for pupils
- Establish and maintain clear boundaries of acceptable pupil behaviour
- Implement the behaviour policy consistently
- Communicate the school's expectations, routines, values and standards through teaching behaviour and in every interaction with pupils
- Model expected behaviour and positive relationships
- Provide a personalised approach to the specific behavioural needs of particular pupils
- Record behaviour incidents promptly
- Challenge pupils to meet the school's expectations

We ask that parents and carers support by:

- Getting to know the school's behaviour policy and reinforce it at home where appropriate
- Supporting their child in adhering to the school's behaviour policy
- Informing the school of any changes in circumstances that may affect their child's behaviour
- Discussing any behavioural concerns with the class teacher promptly
- Taking part in any pastoral work following misbehaviour (for example, attending reviews of behaviour plans)
- Raise any concerns about behaviour management directly with the school, and not in the presence of their child, while continuing to work in partnership with us.

# Timetable:

**PE Days-** PE will be every Tuesday and Wednesday. Children should attend school on PE days in their PE kits.

## PE Kit (to be worn to school on PE Days):

- Plain white t-shirt
- Plain black or dark blue shorts
- Trainers
- Plain dark tracksuit for cold weather
- Please remove earrings or they will be taped over.



# Timetable:

**Forest school** - Unfortunately, we are not able to do forest school until further notice due to our current trained forest school leads are on maternity leave.



# School Uniform:

At Halifax Primary School we promote an atmosphere which encourages aspiration, nurture, collaboration and curiosity. We have high expectations for all children in terms of their learning and behaviour. These high expectations are also reflected in the pride we take in our school uniform and the feeling of belonging it creates.

We believe that a school uniform:

- promotes a sense of pride in the school;
  - engenders a sense of community and belonging towards the school;
  - is practical and smart;
  - identifies the children with the school;
  - makes children feel equal to their peers in terms of appearance;
  - is good value for money;
- is designed with health and safety in mind

# School Uniform:

## For Every Day:

- Royal blue sweatshirt or cardigan – optional with school logo from PMG Schoolwear (not to be worn around the waist)
- Grey or Black school trousers (not leggings or cropped trousers)
- Grey or Black shorts (tailored and knee length)
- Grey or Black skirt (knee length) or pinafore dress
- White or pale blue polo shirt
- Blue gingham dress, playsuit, shorts or culottes
- White, grey or black socks
- White, grey, black or navy tights
- All black, flat, sensible footwear only (trainers, ankle boots or shoes)
- Weatherproof coat

## For PE:

- Black or navy shorts – sports shorts or cycling short just above the knee
- White t-shirt - optional with school logo from PMG Schoolwear
- Plimsolls or trainers
- Plain black or navy jogging bottoms and a plain black or navy jogging top.

Please note that to help families minimise the cost of uniform and ensure equality for all pupils, we will not accept branded sports items as part of the PE uniform.

# School Uniform:

## For Forest School:

- Waterproof jacket and trousers  
(Early Years, Year 1 and Year 2 provided by school)
- Long sleeved top (even in warmer weather)
- Trousers (even in warmer weather)
- Jumper
- Wellies
- Spare socks and trainers are required to wear in school
- Hat, scarf and gloves (in colder weather)
- Sun hat (in warmer weather)

## For Swimming:

- Swimming suit (one piece not bikini) or close fitting swimming trunks
- Swimming cap
- Towel

Year 5 & 6 pupils will need to bring shorts and a t-shirt for life saving.

For health and safety reasons, please ensure that earrings are removed for PE and Swimming days and long hair is tied back.

# Other items:

Please can the children bring a named water bottle and book bag (no rucksacks please due to pegs). No toys or keyrings to be brought into school please. It is important that all items brought into school are named.



# Year group expectations:

Phonics screening check.

In June, all Year 1 children across the country, complete a phonics screening check where they have to read 20 real words and 20 alien words. These contain sounds taught in year one and is testing their phonics ability. The children usually need to read 32/40 words correctly to pass. If they don't pass, it is retaken in year two. The main thing you can do to help is read with your child at home every day.

2017 national curriculum assessments

## Key stage 1

### Phonics screening check

Pupils' materials



Check 1  
Section 1

stip	
prool	
darps	
thand	

SCHOLASTIC Practice for the Phonics Screening Check Page 7 of 16



# Homework:

The most important thing you can do at home is to read with your child at home **every day**. Reading is the key to their success in Primary School. We will count reads on a Friday to Friday basis. Reading books will be changed on a Monday. We will be looking for a minimum of 5 reads a week but 7 is preferable. Children will receive a dojo for meeting the 5 reads. The top readers achieve a book as a prize at the end of the term.



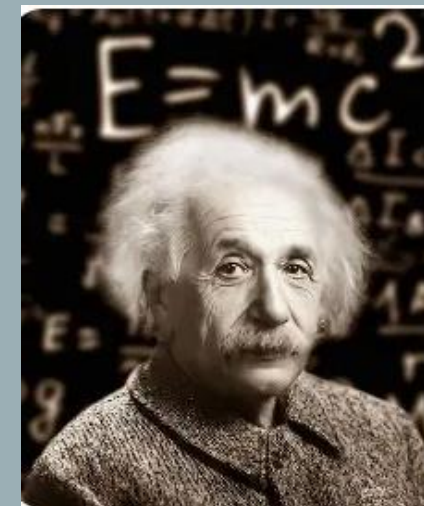
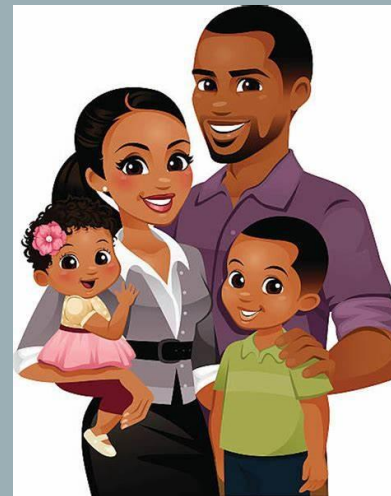
# Curriculum:

## Autumn 1

Our Topic in Autumn Term will be **Celebrating significant people**. We will look at significant individuals using timelines and making comparisons.

We will also observe changes across the seasons by exploring the signs of Autumn, Winter, Spring and Summer.

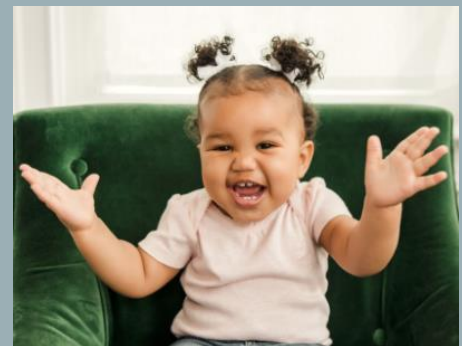
On Friday 5th September, we will have our topic entry day. We ask that the children come to school dressed as someone they admire e.g. significant family member, famous person or a professional.



# Curriculum: Autumn 1

In order to support with this learning, we also ask that each child brings in 4 photos of their family or varying ages as we will be sorting these in chronological order. Please can these be brought in by Friday 12<sup>th</sup> September at the very latest as we will be using them on Monday 15<sup>th</sup> September.

On Monday 13<sup>th</sup> October we will be comparing Victorian England to now and will be turning the classroom into a Victorian classroom! We ask that the children come dressed as Victorian children. Here are some ideas:



# Curriculum:

## Autumn 2

In Autumn 2, we will explore why some people are considered to be significant before going on to learn about some significant explorers including Christopher Columbus and Mae Jemison. The children will increase their awareness of the past by finding out about Guy Fawkes and Remembrance Day.

In Science, we will find out about the properties of materials to help us design our own party hat.



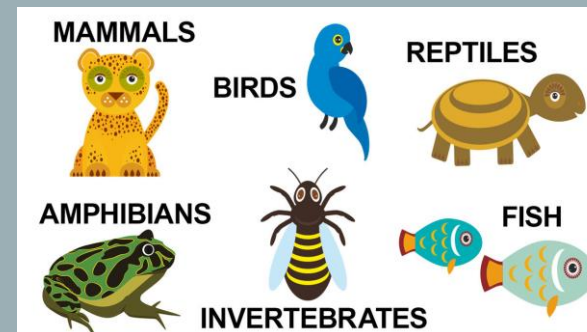
# Curriculum:

## Spring Term

Our topic in Spring Term will be 'Incredible Ipswich'. We will be going for a walk around our local area and looking at human and physical features. We will also study how Ipswich has changed over time.

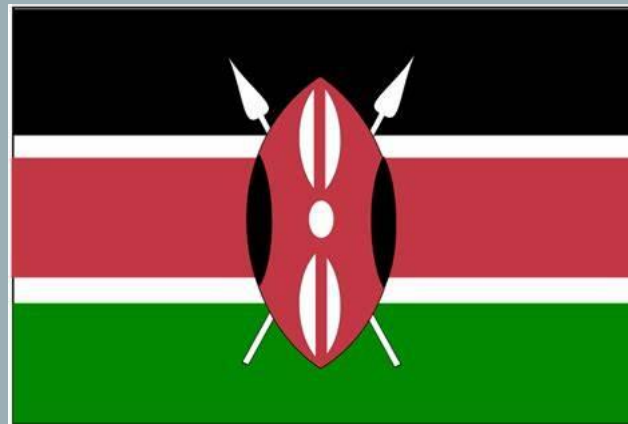
Finally, we will then be comparing our local area to Felixstowe. We will hopefully go on a trip to Felixstowe at the end of the Spring term.

In Science, this term we will learn about animals include humans. We will learn about different animal groups and how we can classify them.



# Curriculum:

## Summer Term



Our Topic in Summer Term will be 'Around the world- Africa' where we will focus on Kenya. We will compare the UK and Africa and find out about physical and geographical features in the UK and around the world. We will hopefully go on a trip to Colchester Zoo at the end of the Summer term to look at African animals

In Science this term we will be learning about trees and plants and growing some of our own sunflower plants.





**We thank you in  
advance for your  
support and very much  
look forward to next  
year.**

**Any questions?**