

Halifax Primary School



Attendance Policy

Purpose	The purpose of Halifax Primary's Attendance Policy is to set out the expectations for the attendance and punctuality of pupils and the systems in place to support this.
Audience	<ul style="list-style-type: none">• School Governors• Staff• Pupils & Parents
Related Policies	<ul style="list-style-type: none">• Safeguarding Policy• Behaviour Policy
Policy Updated	January 2023
Future Policy Review	January 2025
Policy Approved By:	Local Governing Committee
Date Policy Approved:	16 th March 2023

Contents

1. Aims	2
2. Legislation and guidance	2
3. Roles and responsibilities	2
4. Recording attendance.....	5
5. Authorised and unauthorised absence	7
6. Strategies for promoting attendance	8
7. Attendance monitoring	8
8. Monitoring arrangements.....	9
9. Links with other policies.....	9
Appendix 1: Attendance codes.....	9

1. Aims

We are committed to meeting our obligation with regards to school attendance through our whole-school culture and ethos that values good attendance, including:

- › Promoting good attendance
- › Reducing absence, including persistent and severe absence
- › Ensuring every pupil has access to the full-time education to which they are entitled
- › Acting early to address patterns of absence
- › Building strong relationships with families to ensure pupils have the support in place to attend school

We will also promote and support punctuality in attending lessons.

2. Legislation and guidance

This policy meets the requirements of the [working together to improve school attendance](#) from the Department for Education (DfE), and refers to the DfE's statutory guidance on [school attendance parental responsibility measures](#). These documents are drawn from the following legislation setting out the legal powers and duties that govern school attendance:

- › Part 6 of [The Education Act 1996](#)
- › Part 3 of [The Education Act 2002](#)
- › Part 7 of [The Education and Inspections Act 2006](#)
- › [The Education \(Pupil Registration\) \(England\) Regulations 2006 \(and 2010, 2011, 2013, 2016 amendments\)](#)
- › [The Education \(Penalty Notices\) \(England\) \(Amendment\) Regulations 2013](#)

This policy also refers to the DfE's guidance on the school census, which explains the persistent absence threshold.

3. Roles and responsibilities

3.1 The local governing committee

The local governing committee is responsible for:

- › Promoting the importance of school attendance across the school's policies and ethos
- › Making sure school leaders fulfil expectations and statutory duties
- › Regularly reviewing and challenging attendance data

- › Monitoring attendance figures for the whole school
- › Making sure staff receive adequate training on attendance
- › Holding the headteacher to account for the implementation of this policy

3.2 The headteacher

The headteacher is responsible for:

- › Implementation of this policy at the school
- › Monitoring school-level absence data and reporting it to governors
- › Supporting staff with monitoring the attendance of individual pupils
- › Monitoring the impact of any implemented attendance strategies
- › Issuing fixed-penalty notices, where necessary

3.3 The designated senior leader responsible for attendance

The designated senior leader is responsible for:

- › Leading attendance across the school
- › Offering a clear vision for attendance improvement
- › Evaluating and monitoring expectations and processes
- › Having an oversight of data analysis
- › Benchmarking attendance data to identify areas of focus for improvement
- › Devising specific strategies to address areas of poor attendance identified through data
- › Arranging calls and meetings with parents and carers to discuss attendance issues
- › Delivering targeted intervention and support to pupils and families

The designated senior leader responsible for attendance is Mrs Kelly Landers and can be contacted via the school office 01473 683932.

3.4 The learning mentor

The learning mentor is responsible for:

- › Monitoring and analysing attendance data (see section 7)
- › Providing regular attendance reports to school staff and reporting concerns about attendance to the designated senior leader responsible for attendance and the headteacher
- › Arranging calls and meetings with parents and carers to discuss attendance issues
- › Working with education welfare officers to tackle persistent absence
- › Authorised by the headteacher to liaise with the local authority in regards to fixed-penalty notices

The learning mentor is Mrs Sarah Barnes and can be contacted via the school office 01473 683932.

3.5 Class Teachers

Class teachers are responsible for recording attendance on a daily basis, using the correct codes, and submitting this information to the school office by 9:05am for the morning register. (For afternoon registration times see Section 4.1)

3.6 School Admin staff

School admin staff will:

- › Take calls from parents and carers about absence on a day-to-day basis and record it on the school system

- › Transfer calls from parents to the learning mentor or designated senior leader in order to provide them with more detailed support on attendance

3.7 Parents/carers

Parents/carers are expected to:

- › Make sure their child attends every day on time
- › Call or email the school to report their child's absence before 9:30am on the day of the absence and each subsequent day of absence, and advise when they are expected to return
- › Provide the school with more than 1 emergency contact number for their child
- › Ensure that, where possible, appointments for their child are made outside of the school day

3.8 Pupils

Pupils are expected to:

- › Attend school every day on time

4. Recording attendance

4.1 Attendance register

We will keep an attendance register, and place all pupils onto this register.

We will take our attendance register at the start of the first session of each school day and once during the second session. It will mark whether every pupil is:

- › Present
- › Attending an approved off-site educational activity
- › Absent
- › Unable to attend due to exceptional circumstances

Any amendment to the attendance register will include:

- › The original entry
- › The amended entry
- › The reason for the amendment
- › The date on which the amendment was made
- › The name and position of the person who made the amendment

See appendix 1 for the DfE attendance codes.

We will also record:

- › Whether the absence is authorised or not
- › The nature of the activity if a pupil is attending an approved educational activity
- › The nature of circumstances where a pupil is unable to attend due to exceptional circumstances

We will keep every entry on the attendance register for 3 years after the date on which the entry was made.

Pupils must arrive in school by **8:45am** on each school day.

The register for the first session will be taken at **8:45am** and will be kept open until **9:30am**. Pupils arriving in school after **8:50am** will be registered as **Late**. Pupils arriving after **9:30am** will be marked as **Unauthorised Absence**. The register for the second session will be taken at the end of lunch, as lunch times are staggered the following timings apply:

Key Stage	End of Lunch	Registers Close
Early Years	12:50pm	1:00pm
Key Stage 1	1:05pm	1:15pm
Lower Key Stage 2	12:50pm	1:00pm
Upper Key Stage 2	1:20pm	1:30pm

4.2 Unplanned absence

The pupil's parent or carer must notify the school of the reason for the absence on the first day of an unplanned absence by 9:30am or as soon as practically possible by emailing admin@halifax.omat.org.uk or calling the school office 01473 682932 (see also section 7).

We will mark absence due to illness as authorised unless the school has a genuine concern about the authenticity of the illness.

If the authenticity of the illness is in doubt, the school may ask the pupil's parent or carer to provide medical evidence, such as a doctor's note, prescription, appointment card or other appropriate form of evidence. We will not ask for medical evidence unnecessarily.

If the school is not satisfied about the authenticity of the illness, the absence will be recorded as unauthorised and parents or carers will be notified of this in advance. Please see Appendices 2 & 3 for details of how the school responds to ongoing attendance issues.

4.3 Planned absence

Attending a medical or dental appointment will be counted as authorised as long as the pupil's parent or carer notifies the school in advance of the appointment.

Leave of absence requests can be made by emailing admin@halifax.omat.org.uk and parents or carers will receive a confirmation email.

However, we encourage parents or carers to make medical and dental appointments out of school hours where possible. Where this is not possible, the pupil should be out of school for the minimum amount of time necessary.

The pupil's parent or carer must also apply for other types of term-time absence as far in advance as possible of the requested absence. Go to section 5 to find out which term-time absences the school can authorise.

4.4 Lateness and punctuality

A pupil who arrives late:

- Before the register has closed will be marked as late, using the appropriate code
- After the register has closed will be marked as absent, using the appropriate code

Please see Appendix 4 for details of how the school responds to ongoing punctuality issues.

4.5 Following up unexplained absence

Where any pupil we expect to attend school does not attend, or stops attending, without reason, the school will:

- Call the pupil's parent or carer on the morning of the first day of unexplained absence to ascertain the reason. If the school cannot reach any of the pupil's emergency contacts, the school may carry out a welfare visit to the pupil's home address
- Identify whether the absence is approved or not

- › Identify the correct attendance code to use and input it as soon as the reason for absence is ascertained – this will be no later than 5 working days after the session
- › Call the parent or carer on each day that the absence continues without explanation to ensure proper safeguarding action is taken where necessary. If absence continues, the school will consider involving an education welfare officer

4.6 Reporting to parents or carers

The school will regularly inform parents or carers about their child's attendance and absence levels via termly reports and at Parents Consultation Meetings. In addition to this, parents or carers can log in to the Arbor App to access their child's 'real-time' attendance information online.

5. Authorised and unauthorised absence

5.1 Approval for term-time absence

The headteacher will only grant a leave of absence to a pupil during term time if they consider there to be 'exceptional circumstances'. A leave of absence is granted at the headteacher's discretion, including the length of time the pupil is authorised to be absent for.

We define 'exceptional circumstances' as:

- › Holidays for families whose members are service personnel and who are prevented from taking their holiday other than term time
- › When a family needs to spend time together to support each other during or after a crisis, such as a bereavement

The school considers each application for term-time absence individually, taking into account the specific facts, circumstances and relevant context behind the request.

Any request should be submitted as soon as it is anticipated and, where possible, at least 3 weeks before the absence, by emailing the headteacher via the school office at admin@halifax.omat.org.uk. The headteacher may require evidence to support any request for leave of absence.

Valid reasons for **authorised absence** include:

- › Illness and emergency medical or dental appointments (see sections 4.2 and 4.3 for more detail)
- › Religious observance – where the day is exclusively set apart for religious observance by the religious body to which the pupil's parents or carers belong. If necessary, the school will seek advice from the parents' religious body to confirm whether the day is set apart
- › Traveller pupils travelling for occupational purposes – this covers Roma, English and Welsh gypsies, Irish and Scottish travellers, showmen (fairground people) and circus people, bargees (occupational boat dwellers) and new travellers. Absence may be authorised only when a traveller family is known to be travelling for occupational purposes and has agreed this with the school, but it is not known whether the pupil is attending educational provision
- › Family bereavement

5.2 Legal sanctions

The local authority can fine parents or carers for the unauthorised absence of their child from school, where the child is of compulsory school age.

If issued with a fine, or penalty notice, each parent must pay £60 per child within 21 days or £120 within 28 days. The payment must be made directly to the local authority, the school does not receive these funds.

Penalty notices can be issued by a local authority officer or the police.

The decision on whether or not to issue a penalty notice may take into account:

- › The number of unauthorised absences occurring within a rolling academic year
- › One-off instances of irregular attendance, such as holidays taken in term time without permission
- › Where an excluded pupil is found in a public place during school hours without a justifiable reason

If the payment has not been made after 28 days, the local authority can decide whether to prosecute or withdraw the notice.

6. Strategies for promoting attendance

At Halifax we promote attendance and punctuality by:

- › Recognising punctuality and good attendance daily in class
- › Clear information on the expectations for attendance is shared with all parents and carers
- › Ensure pupils, parents and carers understand that good attendance is essential to each pupil's success in school
- › Weekly Class Attendance Awards given and celebrated during the whole school assembly
- › Celebrate our Class Attendance Winners on the school website and via Class Dojo
- › Termly attendance awards for high levels of attendance and most improved attendance
- › Individual support to families to help improve attendance

7. Attendance monitoring

7.1 Monitoring attendance

The school will:

- › Monitor attendance and absence data half-termly, termly and yearly across the school and at an individual pupil level
- › Identify whether or not there are particular groups of children whose absences may be a cause for concern

Pupil-level absence data will be collected by the Department for Education (DfE) each term and published at national and local authority level through the DfE's school absence national statistics releases. The underlying school-level absence data is published alongside the national statistics. The school will compare attendance data to the national average, and share this with the governing board.

7.2 Analysing attendance

The school will:

- › Analyse attendance and absence data regularly to identify pupils or cohorts that need additional support with their attendance, and use this analysis to provide targeted support to these pupils and their families
- › Look at historic and emerging patterns of attendance and absence, and then develop strategies to address these patterns

7.3 Using data to improve attendance

The school will:

- › Provide regular attendance reports to class teacher, and other school leaders, to facilitate discussions with pupils and families
- › Use data to monitor and evaluate the impact of any interventions put in place in order to modify them and inform future strategies

7.4 Reducing persistent and severe absence

Persistent absence is where a pupil misses 10% or more of school, and severe absence is where a pupil misses 50% or more of school.

The school will:

- › Use attendance data to find patterns and trends of persistent and severe absence
- › Send letters to parents to make them aware of attendance and punctuality concerns

- Hold regular meetings with the parents of pupils who the school (and/or local authority) considers to be vulnerable, or are persistently or severely absent, to discuss attendance and engagement at school
- Provide access to wider support services to remove the barriers to attendance

8. Monitoring arrangements

This policy will be reviewed as guidance from the local authority or DfE is updated, and as a minimum every two years by the designated senior leader for attendance. At every review, the policy will be approved by the full local governing committee.

9. Links with other policies

This policy links to the following policies:

- Child protection and safeguarding policy
- Behaviour policy

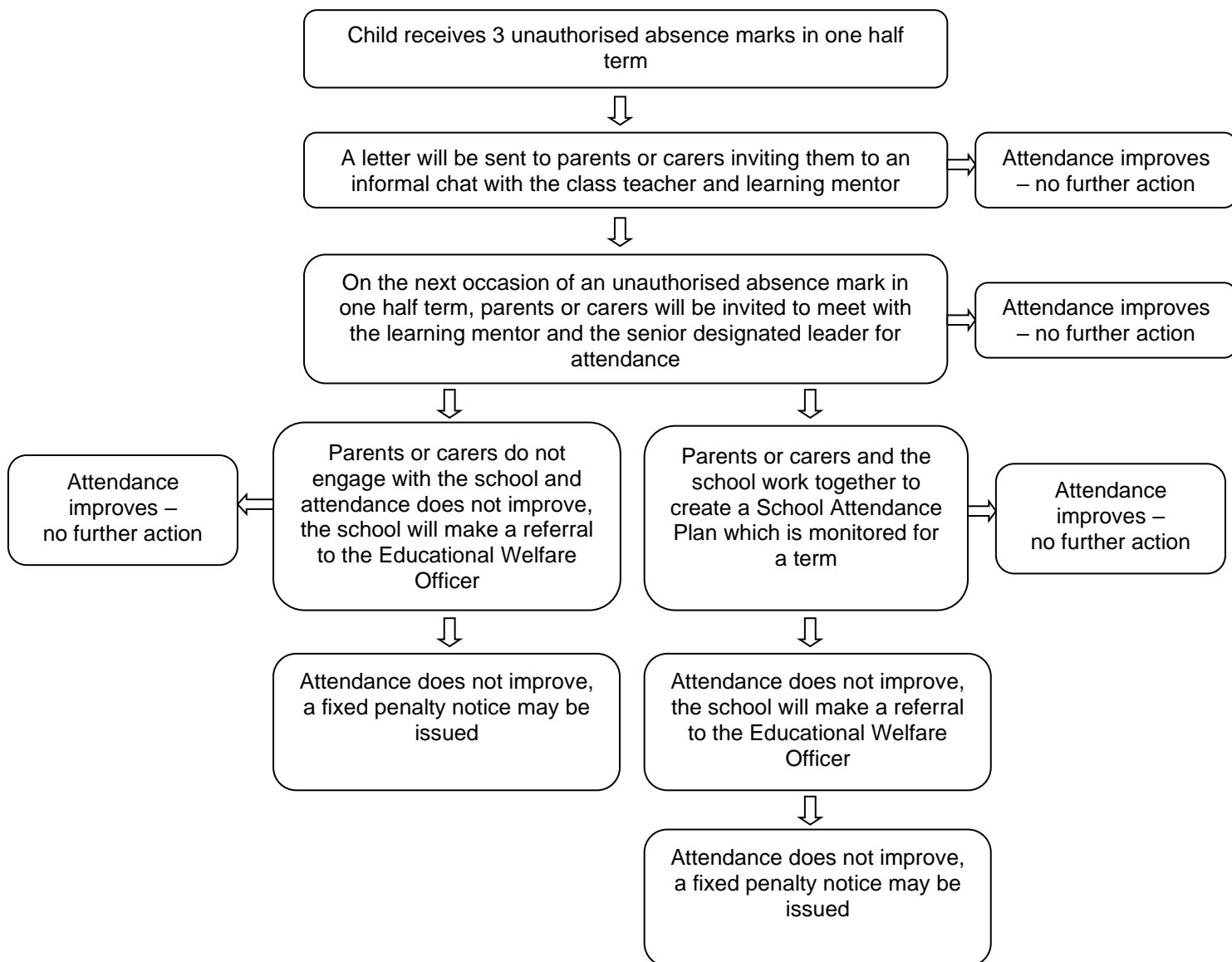
Appendix 1: attendance codes

The following codes are taken from the DfE's guidance on school attendance.

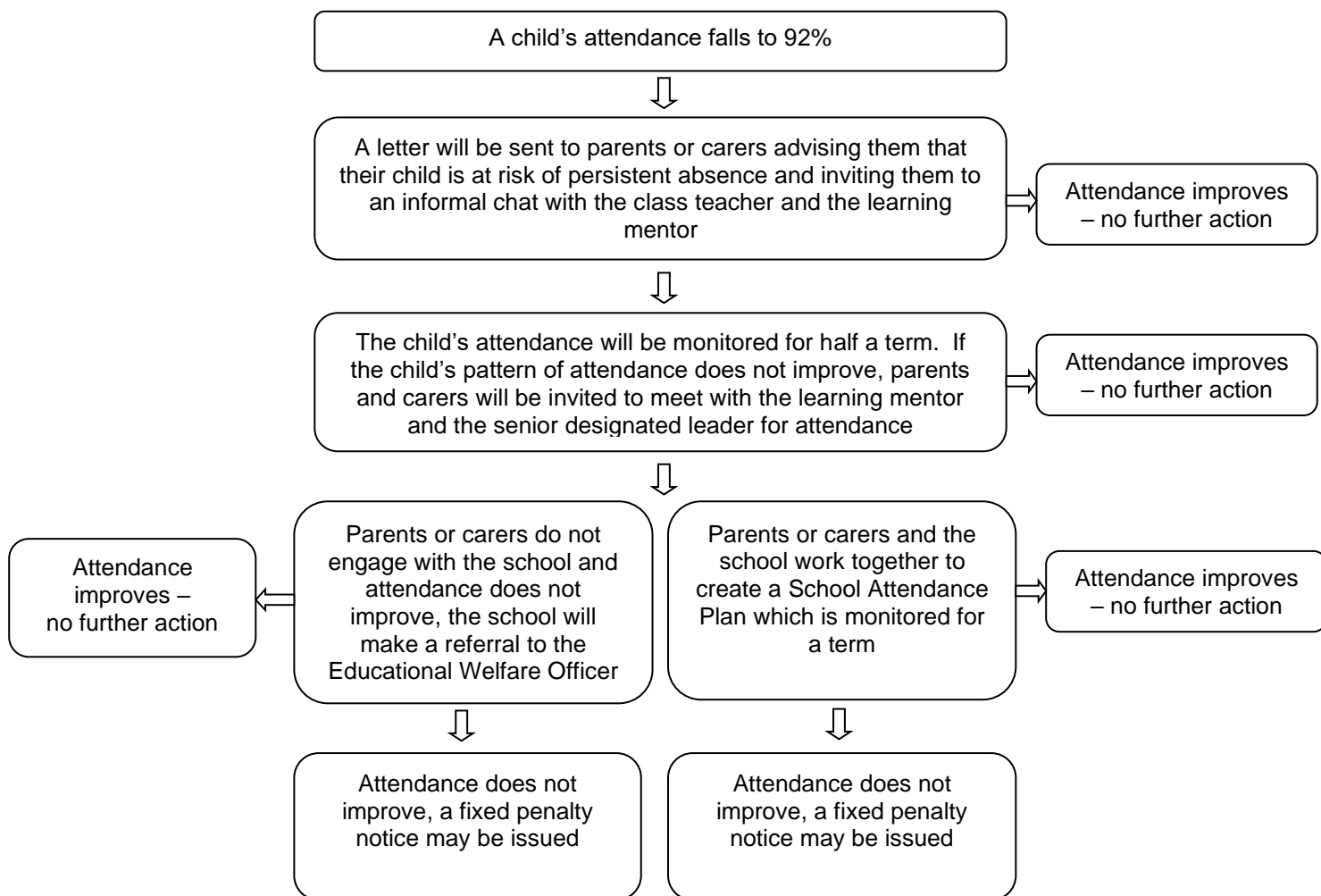
Code	Definition	Scenario
/	Present (am)	Pupil is present at morning registration
\	Present (pm)	Pupil is present at afternoon registration
L	Late arrival	Pupil arrives late before register has closed
B	Off-site educational activity	Pupil is at a supervised off-site educational activity approved by the school
D	Dual registered	Pupil is attending a session at another setting where they are also registered
J	Interview	Pupil has an interview with a prospective employer/educational establishment
P	Sporting activity	Pupil is participating in a supervised sporting activity approved by the school
V	Educational trip or visit	Pupil is on an educational visit/trip organised, or approved, by the school
W	Work experience	Pupil is on a work experience placement
Authorised absence		
C	Authorised leave of absence	Pupil has been granted a leave of absence due to exceptional circumstances

E	Excluded	Pupil has been excluded but no alternative provision has been made
H	Authorised holiday	Pupil has been allowed to go on holiday due to exceptional circumstances
I	Illness	School has been notified that a pupil will be absent due to illness
M	Medical/dental appointment	Pupil is at a medical or dental appointment
R	Religious observance	Pupil is taking part in a day of religious observance
S	Study leave	Year 11 pupil is on study leave during their public examinations
T	Gypsy, Roma and traveller absence	Pupil from a traveller community is travelling, as agreed with the school
Unauthorised absence		
G	Unauthorised holiday	Pupil is on a holiday that was not approved by the school
N	Reason not provided	Pupil is absent for an unknown reason (this code should be amended when the reason emerges, or replaced with code O if no reason for absence has been provided after a reasonable amount of time)
O	Unauthorised absence	School is not satisfied with reason for pupil's absence
U	Arrival after registration	Pupil arrived at school after the register closed
X	Not required to be in school	Pupil of non-compulsory school age is not required to attend
Y	Unable to attend due to exceptional circumstances	School site is closed, there is disruption to travel as a result of a local/national emergency, or pupil is in custody
Z	Pupil not on admission register	Register set up but pupil has not yet joined the school
#	Planned school closure	Whole or partial school closure due to half-term/bank holiday/INSET day

Appendix 2: procedures for improving attendance – unauthorised absences



Appendix 3: procedures for improving attendance – persistent absence



Appendix 4: procedures for improving punctuality

